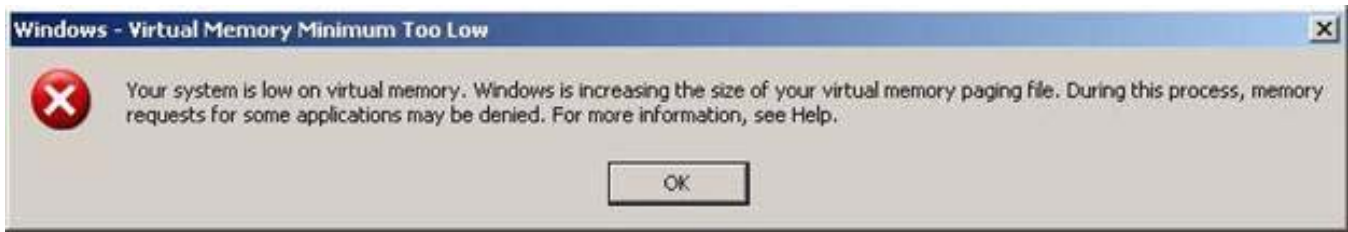


How to solve the problem of the VLC reporting “Virtual Memory Minimum Too Low”

Here is a sample of the message you are probably receiving below



WARNING

The procedures below should only be performed by technical users familiar with Windows advanced setting configurations, and should also understand how to manage computers using a remote connection tool.

If you are not advanced in this technology, please contact Steltronic tech support to do it for you.

VLC Memory Management

Verify the VLC has the memory managed as shown below by Expanding the Virtual Memory

1. On the Vision Lane Computer (VLC) you need to open the Windows explorer.
 - a. You can use your front desk main computer to remotely access the VLC from a remote desktop connection. Type the IP address of the VLC (as shown below).



Your user name is **administrator**, and the password is: **stelxpe**

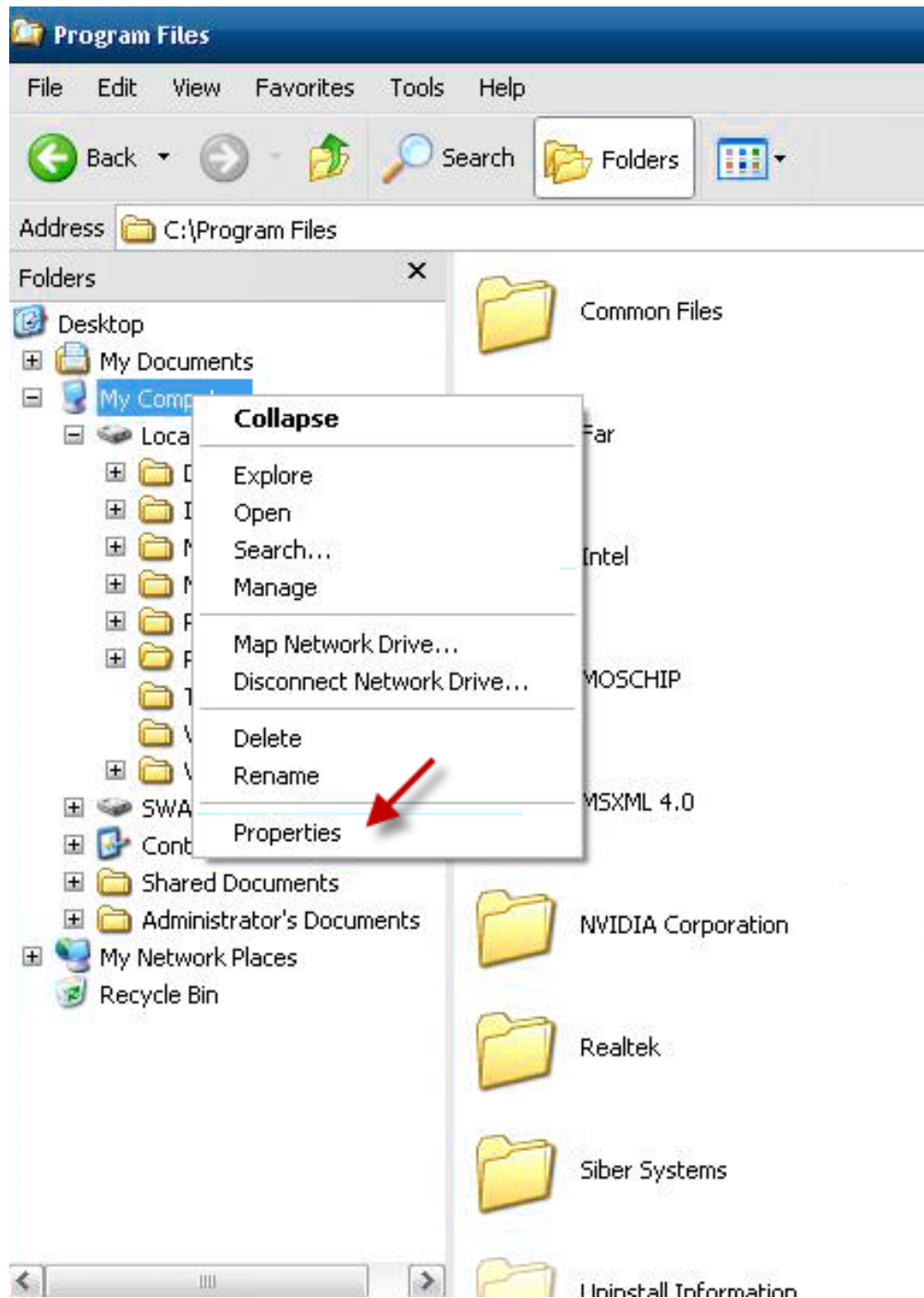
- b. Or connect a mouse and keyboard to the VLC

Once connected to the VLC, you have to stop the scoring from running, so press the <ESC> key on the keyboard.

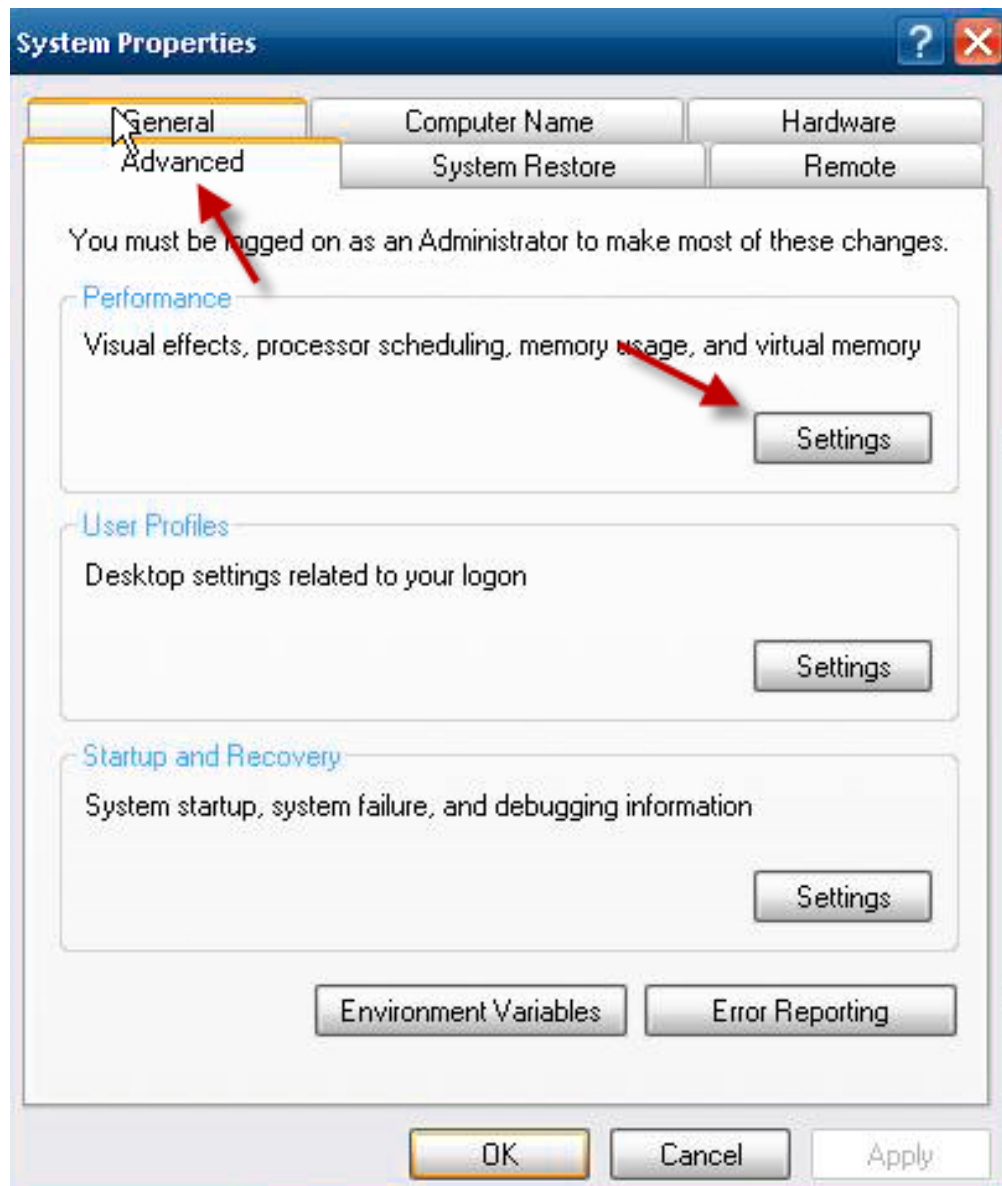
You will see this screen below, select the Explorer button



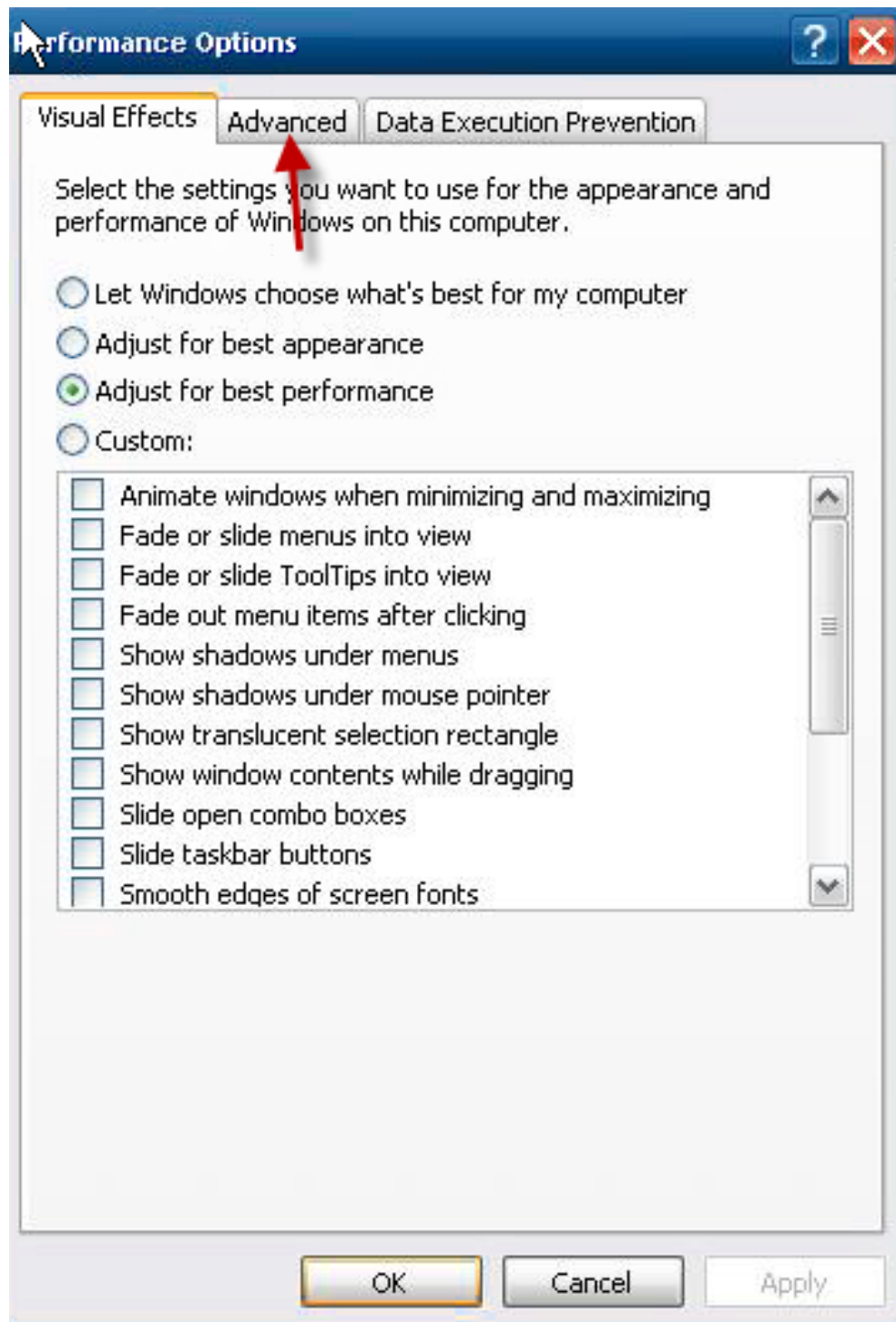
2. Right mouse click on my computer, and then click properties. (shown below)



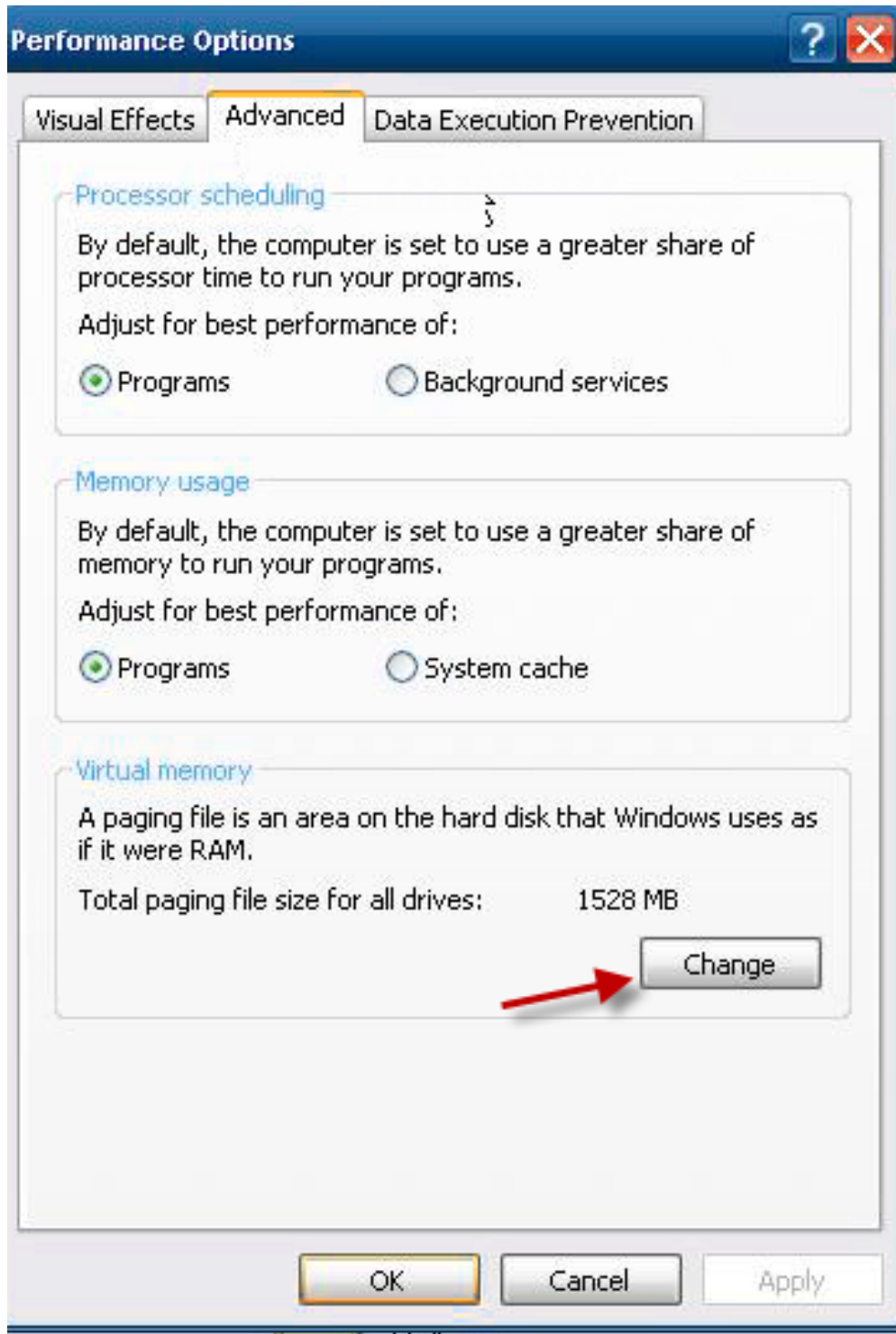
Click the Advanced tab, and then click the Settings Button on performance.



Select the advanced tab



And now click the change button



Using the selections below, check the option called "System Managed Size", and then click the SET button, and then click the OK button to save the changes.

